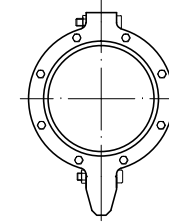
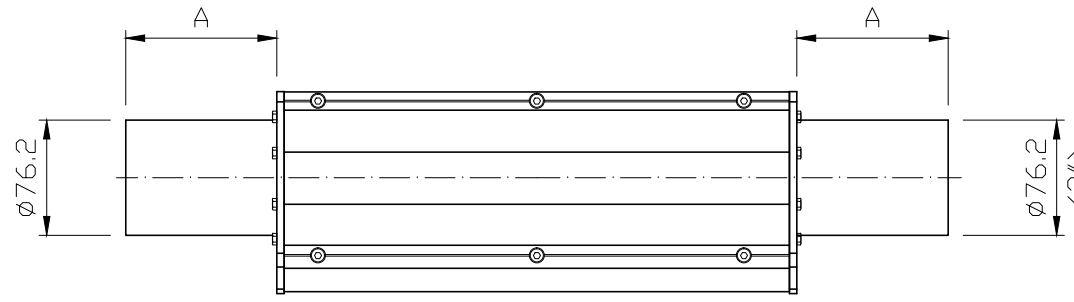
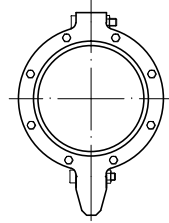
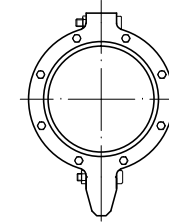
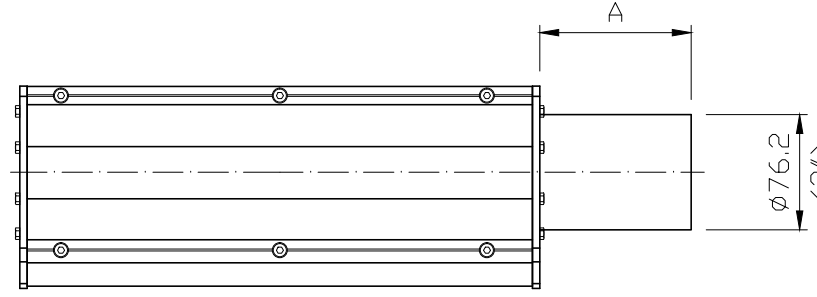
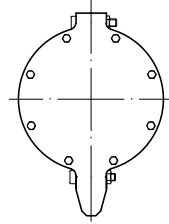


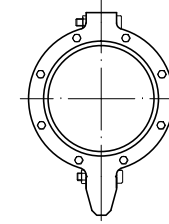
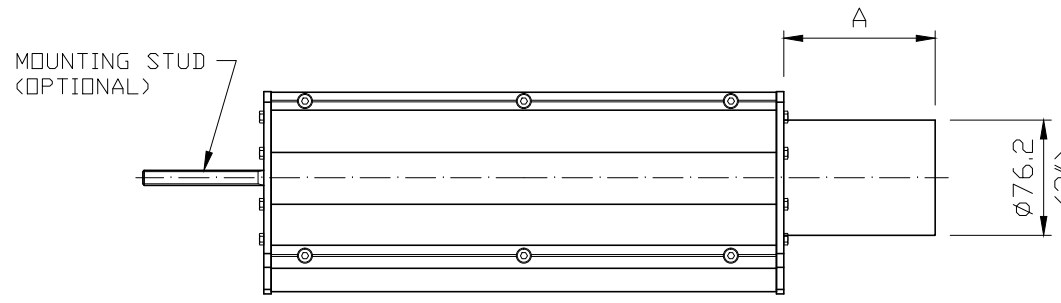
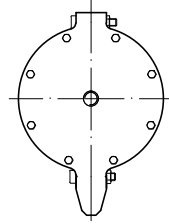
INLET BOTH ENDS



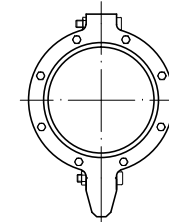
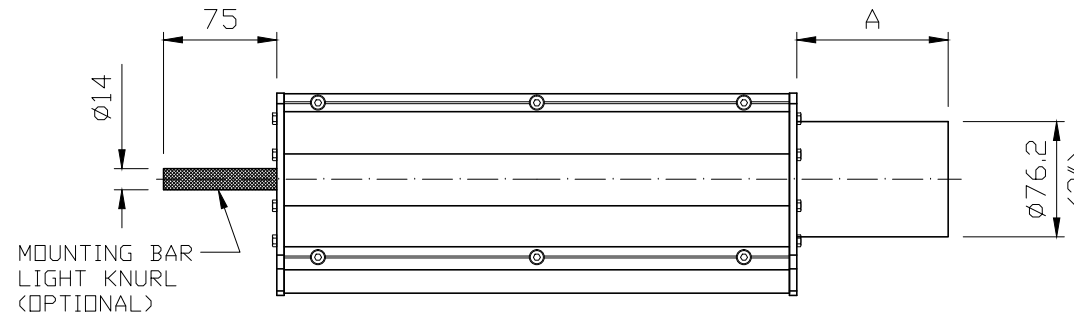
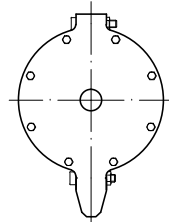
END INLET +
BLANK END



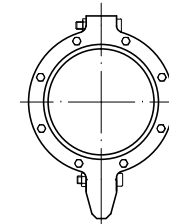
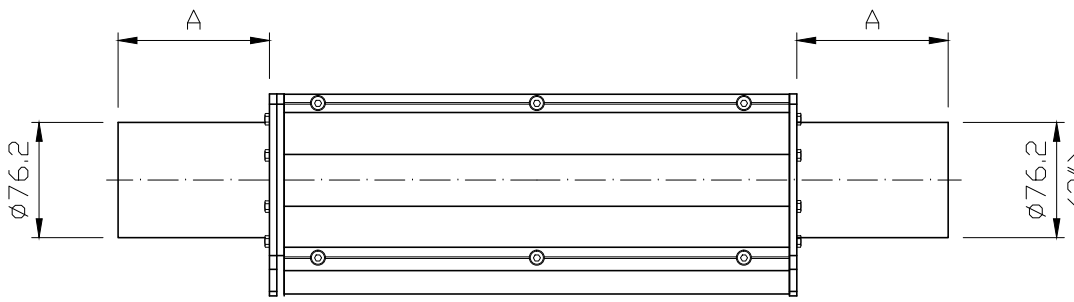
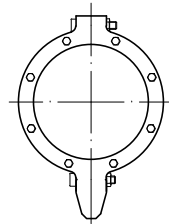
END INLET +
MOUNTING STUD



END INLET +
MOUNTING BAR



END INLET +
MOUNTING SPIGOT



STUDS
M6 X 40
M6 X 100
M8 X 40
M8 X 50
M10 X 50
M10 X 100
M12 X 65
M12 X 135

LENGTH A
50
100
150
200
250
300

NOTES:
FOR ALL OTHER AIRKNIFE DIMENSIONS
SEE OUTLINE DRAWING NO. SK92/297

11916	10788.	3094.	1815	ORG.ISSUE
5.	4.	3.	2.	1.
01/08/12	28/10/09	05/10/06	16/04/02	27/4/99

A3	THIS DRAWING MUST NOT BE LOANED OR COPIED WITHOUT PERMISSION OF			
	AIR CONTROL INDUSTRIES LIMITED			
APPROVED	SCALE 1:5	DRAWN BY: CE	DATE 27/4/99	3rd ANGLE PROJECTION
CHANGE No	TITLE		DRG No.	CONFORMS TO BS308 SHEET
ISSUE	OUTLINE AK08 INLET/MOUNTING OPTIONS		SK99/757	2 OF 2
DATE				