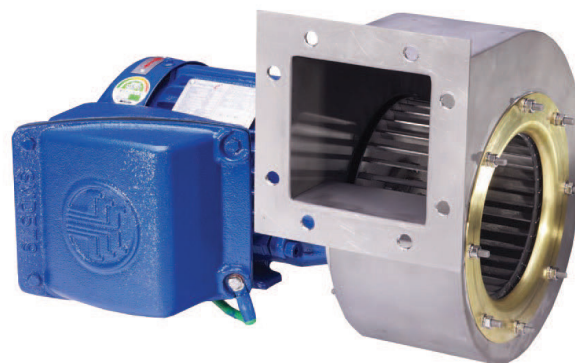


# ATEX APPROVED FANS

Single inlet backward bladed/radial bladed or curved forward bladed centrifugal fans

- Flow rates of 50 to 30000 m<sup>3</sup>/hr (29 to 17650 CFM)
- Pressures from 1 to 60 In.SWG (2,55 mBar to 150 mBar)
- Increased Safety Motors (EExe)
- Flameproof (EExd)
- Non-sparking (Ex N)

With the ATEX Directive now in-effect, ACI is now helping its costumers to meet their end-user obligations to purchase complaint equipment with its range of ATEX approved fans supplied with extra protected motors.



## TYPICAL APPLICATIONS

- Offshor energy exploration
- Hazardous environments
- Corrosive environments



## WHAT ARE THE SPECIFIED CATEGORIES AND ZONES THAT APPLY TO ATEX?

ATEX 100 categories equipment into three groups and into three zones; However, only Category 2 (High level of protection); Zone 1 (A place where an explosive atmosphere is likely to occur in normal operation occasionally); and Zone 2 (A place where an explosive atmosphere is not likely to occur in normal operation but if it does occur, will persist for a short period only) will take effect with ACI's range of fans.

ACIATEX approved Fan and Blower units are manufactures from stainless steel, galvanised steel or aluminium – consideration should be given to any aggressive substances in the explosive atmosphere regarding to the material used in the manufacture. For marine applications special paint finishes are available.

# ATEX APPROVED FANS

CURVES SHOWS ARE FOR 50 HZ ONLY AND DO NOT INCLUDE UNITS FROM ACI EV RANGE.  
PLEASE ASK FOR FURTHER DETAILS ON THIS RANGE.

