

MULTI STAGE BF-27FS

DOUBLE BLOWER PACK

GENERAL CHARACTERISTICS:



The Double Blower Pack consists of 2 x 5MS11/080 (60Hz) or 2 x 7MS11/080 (50Hz) blowers, connected in series and mounted on a framework.

MOTOR TYPE: 1Ph - capacitor start and run, induction type

	Volts	Ph	Hz
NOMINAL SUPPLY:	100	1	60
	110-115	1	50/60
	120	1	60
	240	1	50
	(380-420/220-240 440-80/250-280)	3	50/60

ANCILLARIES: Inlet & discharge spigots / guards, filtered inlet filters, speed controllers

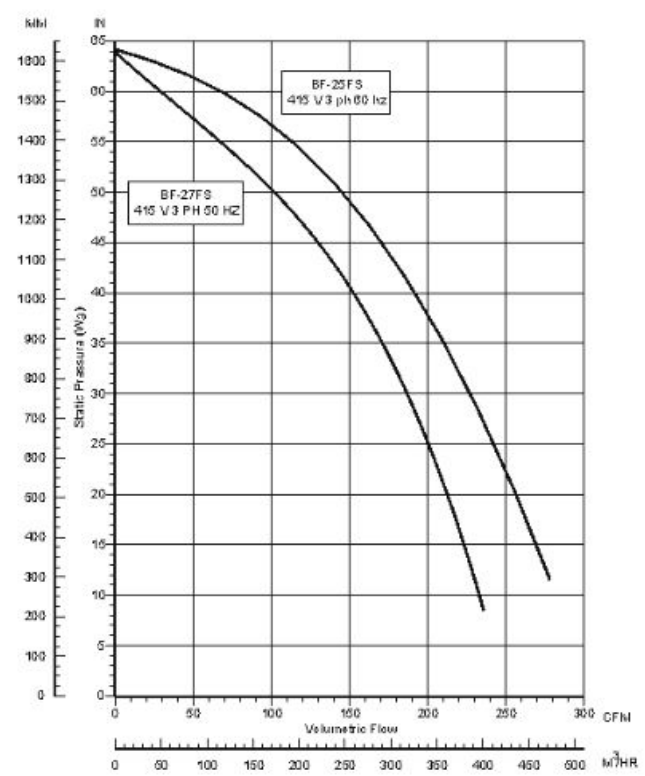
MATERIALS: Fan case: Cast aluminium
Impellers: Aluminium 1200 H14
Stators: White polyester resin

FINISHES: Unpainted or stove enamel (black) as std

MOUNTING OPTIONS: Can be supplied either on a wall bracket, trolley or basic frame

WEIGHT: 65Kgs/143Lbs (wall bracket)
80Kgs/176Lbs (trolley)

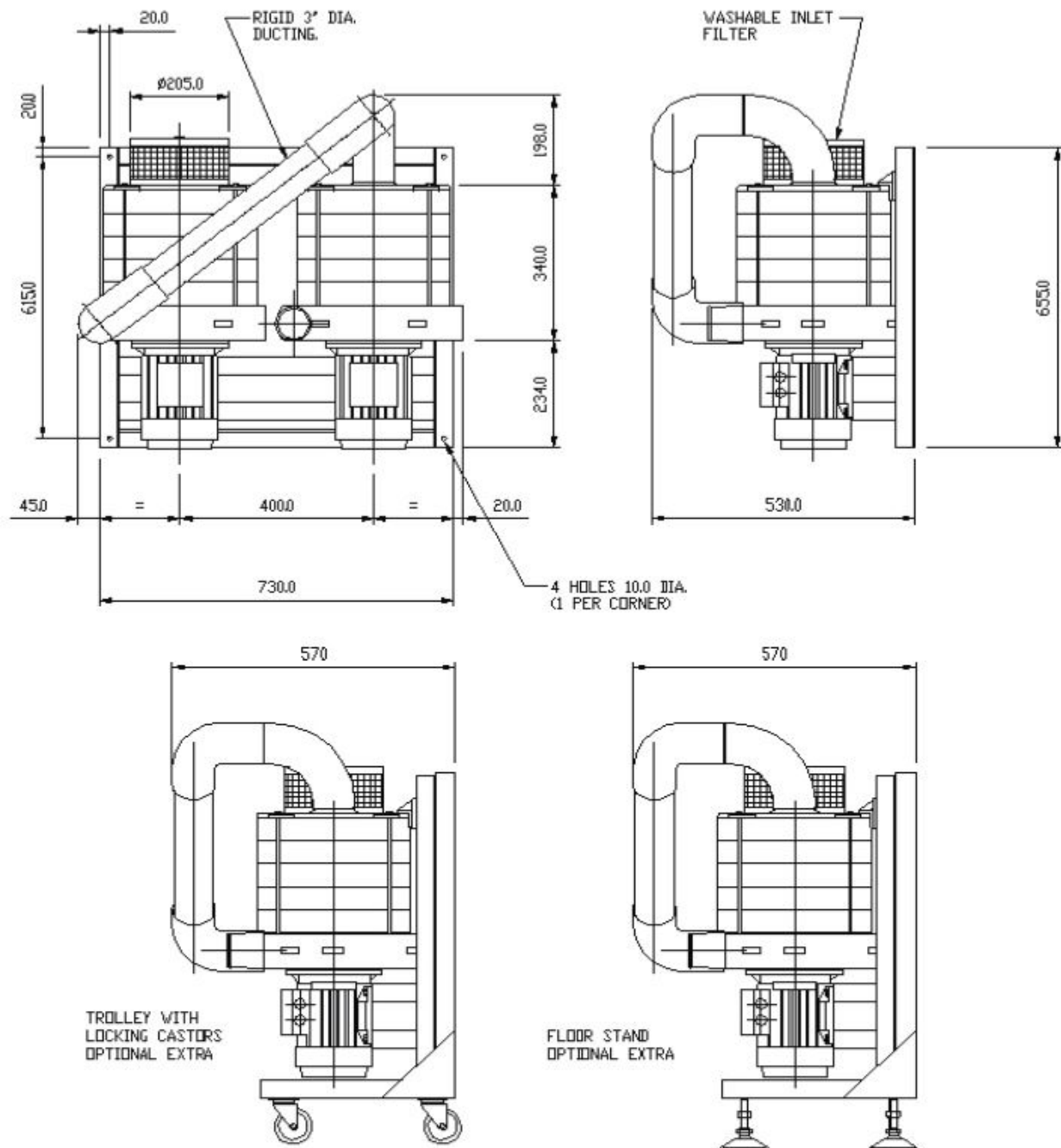
PERFORMANCE DETAILS:



MULTI STAGE BF-27FS

DOUBLE BLOWER PACK

OUTLINE DIMENSIONS DETAILS:



Please note – all drawings measurements are in millimetre (mm)
Please note – above technical specifications are subject to change